

SAFETY & QUALITY A TOP PRIORITY

SOURCE PLASMA is plasma that is collected from **HEALTHY, COMPENSATED DONORS** through a process called plasmapheresis and is used exclusively for further manufacturing into plasma protein therapies. PPTA developed the **INTERNATIONAL QUALITY PLASMA PROGRAM (IQPP)** to further ensure the quality and safety of Source plasma. The IQPP provides independent, third-party evaluation and recognition of a center's adherence to global voluntary industry standards for Source plasma.



SOME IQPP STANDARDS INCLUDE:

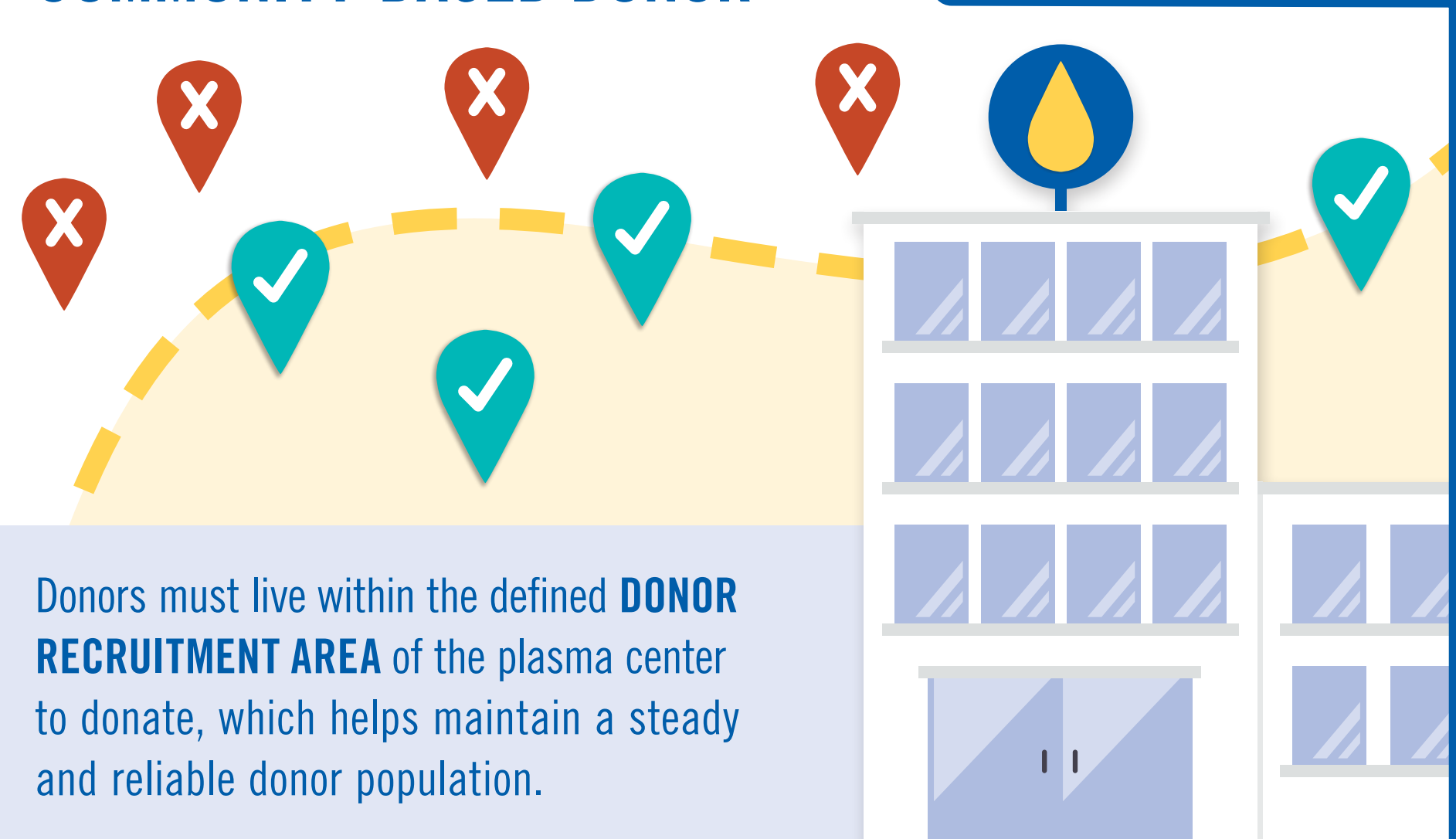
QUALIFIED DONOR



All donors must pass **MEDICAL SCREENINGS AND TESTING** for HIV, Hepatitis B (HBV), and Hepatitis C (HCV) on two different visits. Plasma from a one-time donor may not be used for further manufacture.

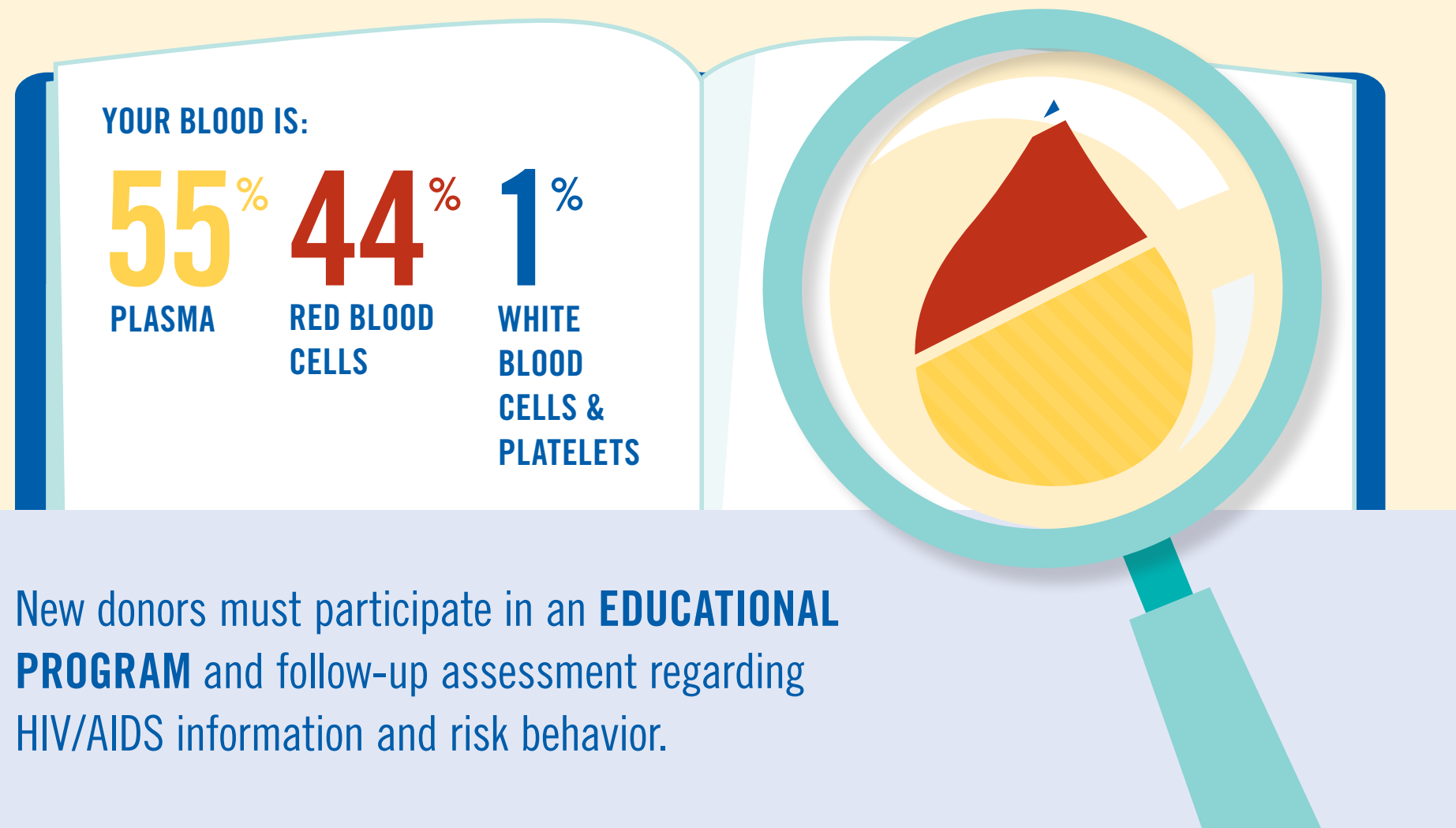
*AGE MAY VARY BY STATE

COMMUNITY-BASED DONOR



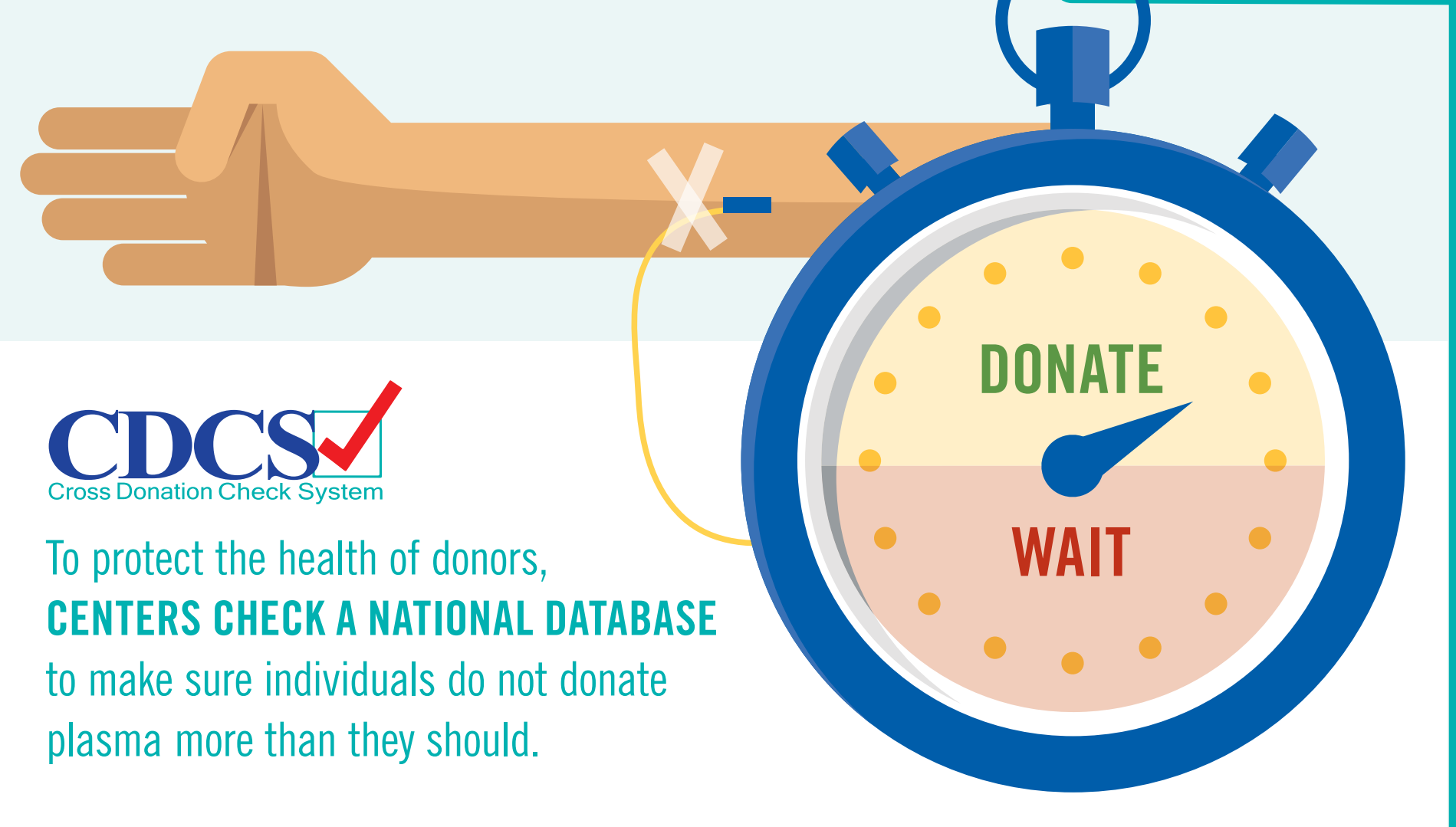
Donors must live within the defined **DONOR RECRUITMENT AREA** of the plasma center to donate, which helps maintain a steady and reliable donor population.

DONOR EDUCATION



New donors must participate in an **EDUCATIONAL PROGRAM** and follow-up assessment regarding HIV/AIDS information and risk behavior.

CROSS DONATION MANAGEMENT



CDCS
Cross Donation Check System

To protect the health of donors, **CENTERS CHECK A NATIONAL DATABASE** to make sure individuals do not donate plasma more than they should.

VIRAL MARKER



Each center **MUST REPORT** its numbers of HIV, HBV, and HCV positive donors, which are **COMPARED TO THE INDUSTRY AVERAGE**. Any center exceeding allowable limits must take corrective actions.

NATIONAL DONOR DEFERRAL REGISTRY

NDDDR ✓
National Donor Deferral Registry

Any plasma donor who **TESTS REACTIVE** for HIV, HBV, or HCV must be entered into a **NATIONAL DONOR DEFERRAL REGISTRY (NDDDR)**. All donors are checked against the NDDDR at each visit; those in the database are **UNABLE TO DONATE PLASMA**.